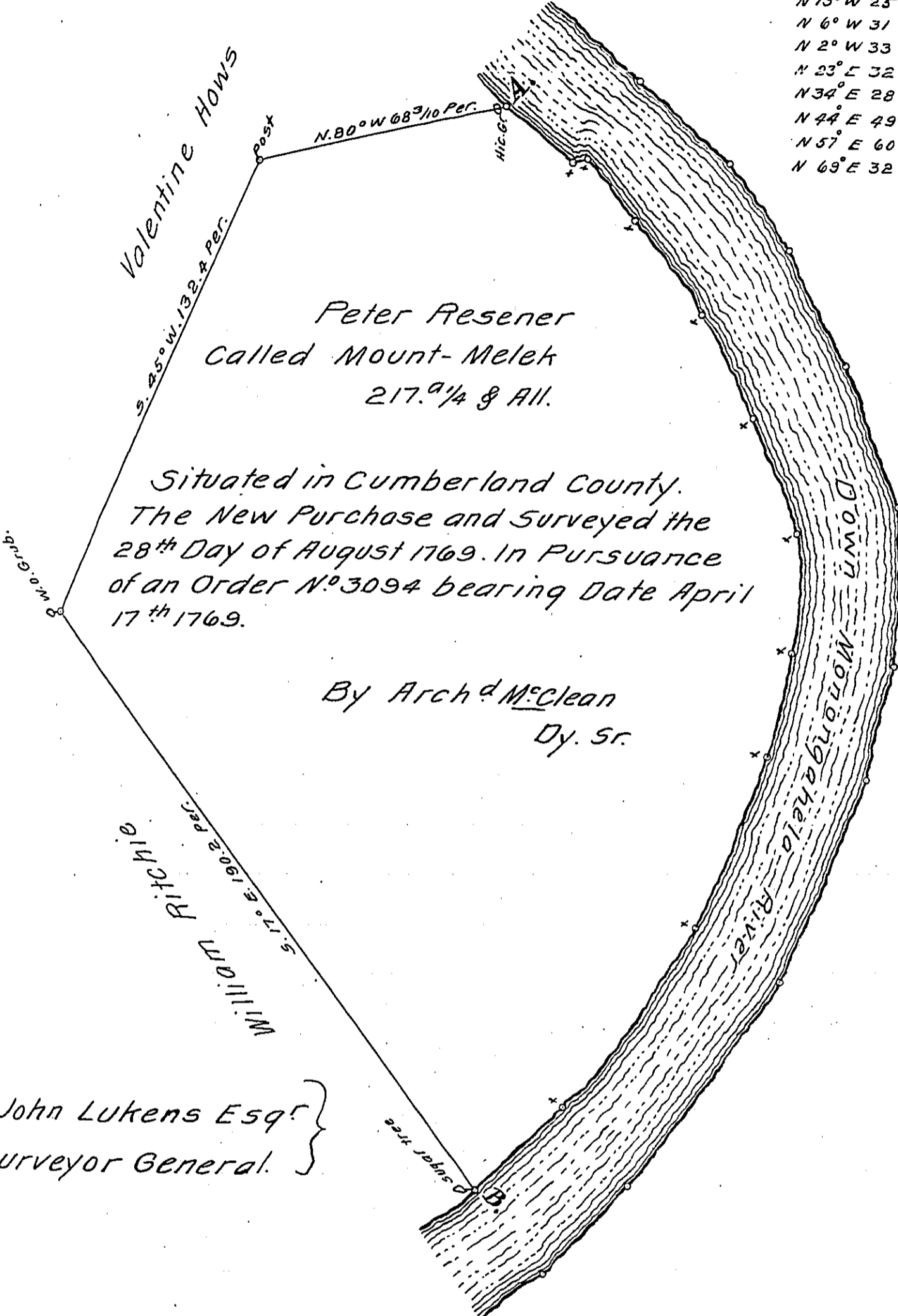


River Courses from A to B.

- N 32° W 23.2 Per.
- West 5.3
- N 19° W 27.
- N 13° W 25
- N 6° W 31
- N 2° W 33
- N 23° E 32
- N 34° E 28
- N 44° E 49
- N 57° E 60
- N 69° E 32 Per.



Peter Resener
 Called Mount-Melek
 217.9 1/4 & All.

Situated in Cumberland County.
 The New Purchase and Surveyed the
 28th Day of August 1769. In Pursuance
 of an Order N^o 3094 bearing Date April
 17th 1769.

By Archd McClean
 Dy. Sr.

To John Lukens Esq^r }
 Surveyor General. }

IN TESTIMONY that the above is a copy of the original remaining on file in the Department of Internal Affairs of Pennsylvania, made conformably to an Act of Assembly approved the 16th day of February, 1833, I have hereunto set my Hand and caused the Seal of said Department to be affixed at Harrisburg, this eighth day of August 1911.

Henry Horvath
 Secretary of Internal Affairs.